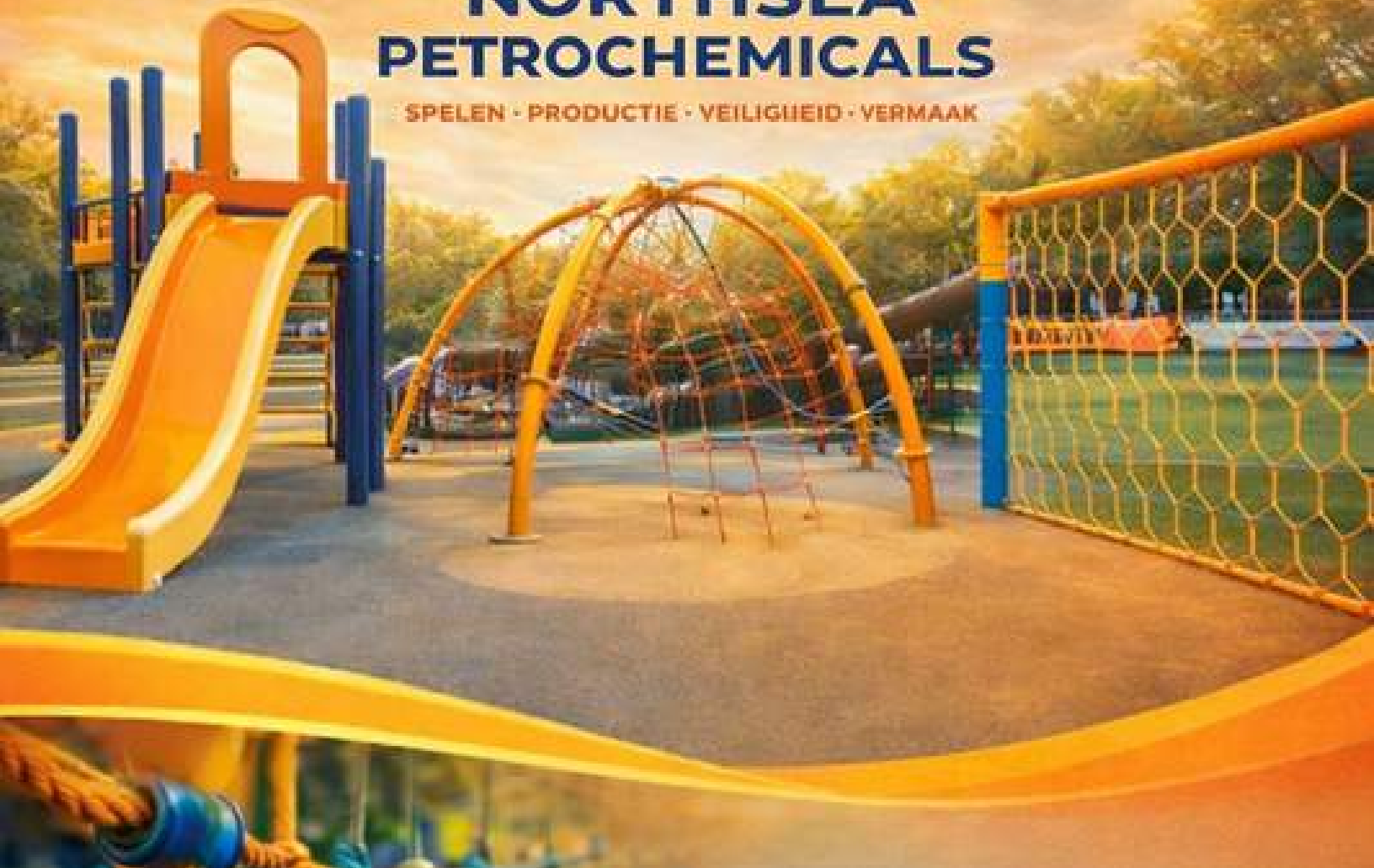




NORTHSEA PETROCHEMICALS

SPELEN · PRODUCTIE · VEILIGHEID · VERMAAK



NORTHSEA PETROCHEMICALS

Speelplaats Touw, Net en HDPE Systemen

Northsea Petrochemicals ontwikkelt, produceert en levert hoogwaardige technische oplossingen voor speelplaatsen, sportzones en buitenomgevingen. Wij richten ons op maximale veiligheid, structurele duurzaamheid en esthetische kwaliteit in elke omgeving waar onze producten worden toegepast.

Met diepgaande kennis van productieprocessen en materiaalkunde combineren wij technische expertise met moderne engineering standaarden. Onze oplossingen worden ontwikkeld met aandacht voor detail, structurele sterkte en langdurige prestaties onder uiteenlopende klimaatomstandigheden.

Wij zijn gespecialiseerd in:

Speelplaats touwen en klimnet systemen

Hoogwaardige HDPE componenten

Slijtvaste verbindingstukken en montage elementen

Technische connectoren met hoge trekkracht

Op maat gemaakte productie en pers oplossingen

Aanvullende onderdelen voor de speelplaats industrie

Onze producten worden ontworpen voor intensief gebruik in openbare ruimtes, scholen, recreatiegebieden en sportfaciliteiten. Door gebruik te maken van duurzame grondstoffen en geoptimaliseerde productieprocessen garanderen wij betrouwbaarheid en consistentie in elk project.

Kwaliteitscontrole is volledig geïntegreerd in ons productieproces. Elke fase, van grondstof selectie tot eindcontrole, wordt zorgvuldig bewaakt volgens strikte interne normen.

Ons productieprincipe is gebaseerd op:

Maximale veiligheid

Lange levensduur

Structurele stabiliteit

Continue prestatie onder belasting

Efficiënte en precieze productie

Wij investeren voortdurend in technologie, innovatie en procesoptimalisatie om te voldoen aan internationale kwaliteitsverwachtingen.

Door nauw samen te werken met onze klanten ontwikkelen wij project specifieke oplossingen die aansluiten bij technische vereisten, esthetische wensen en functionele behoeften.

Onze filosofie is eenvoudig maar krachtig:

Kwaliteit eerst. Betrouwbaarheid altijd. Partnerschap op lange termijn.

Northsea Petrochemicals bouwt duurzame relaties gebaseerd op vertrouwen, transparantie en technische excellentie.

6-strand PP Playground Combination Rope(fc)

- ◆ Material:PP Multi+Gal.Steel
- ◆ Right hand regular lay-preformed
- ◆ Tensile strength:1770N/mm²
- ◆ Dia.:16-22mm



PP Combination Rope(Covered with PP Multifilament)					
Item	No.	Dia.	Construction	KG/MTR	MBL(KN)
TA8-016-608		16	6×8+FC	0.26	32.5
TA8-018-608		18	6×8+FC	0.34	42
TA-020-619		20	6×19+FC	0.52	63.0
TA-020-612		20	6×12+FC	0.41	49.5
TA-022-619		22	6×19+FC	0.60	82.0



6-strand PP Playground Combination Rope(iwrc)

- ◆ Material:PP Multi+Gal.Steel
- ◆ Right hand regular lay-preformed
- ◆ Tensile strength:1770N/mm²
- ◆ Dia.:16-22mm



PP Combination Rope(Covered with PP Multifilament)					
Item No.	Dia.	Construction	KG/MTR	MBL(KN)	
TA8-016-608I	16	6×8+iwrc	0.36	59.0	
TA8-018-608I	18	6×8+iwrc	0.45	73.0	
TA-020-608I	20	6×24+iwrc	0.58	93.6	
TA-022-608I	22	6×24+iwrc	0.87	147.8	

6-strand Polyester Playground Combination Rope(fc)

- ◆ Material:high tenacity polyester fiber+Gal.Steel
- ◆ Right hand regular lay-preformed
- ◆ Tensile strength:1770N/mm²
- ◆ Dia.:16-22mm

Polyester Combination Rope(Covered with polyester fiber)				
Item No.	Dia.	Construction	KG/MTR	MBL(KN)
TB8-016-608	16	6×8+FC	0.30	32.5
TB8-018-608	18	6×8+FC	0.39	42
TB-020-619	20	6×19+FC	0.55	63.0
TB-020-612	20	6×12+FC	0.41	49.5
TB-022-619	22	6×19+FC	0.66	82.0



6-strand Polyester Playground Combination Rope(iwrc)

- ◆ Material:high tenacity polyester fiber+Gal.Steel
- ◆ Right hand regular lay-preformed
- ◆ Tensile strength:1770N/mm²
- ◆ Dia.:16-22mm

Polyester Combination Rope(Covered with polyester fiber)				
Item No.	Dia.	Construction	KG/MTR	MBL(KN)
TB8-016-608I	16	6×8+iwrc	0.36	59.0
TB8-018-608I	18	6×8+iwrc	0.45	73.0
TB-020-608I	20	6×24+iwrc	0.58	93.6
TB-022-608I	22	6×24+iwrc	0.87	147.8

6-strand Nylon Playground Combination Rope(fc)

- ◆ Material:high tenacity polyamide fiber+Gal.Steel
- ◆ Right hand regular lay-preformed
- ◆ Tensile strength:1770N/mm²
- ◆ Dia.:16-22mm

Nylon Combination Rope(Covered with polyamide fiber)				
Item No.	Dia.	Construction	KG/MTR	MBL(KN)
TC-019-624i	19	6×24+iwrc	0.50	79.8

4-strand Playground Combination Rope(fc)

- ◆ Material:high tenacity polyester fiber+Gal.Steel
- ◆ Right hand regular lay-preformed
- ◆ Tensile strength:1770N/mm²
- ◆ Dia.:16-22mm

Polyester Combination Rope(Covered with polyester fiber)				
Item No.	Dia.	Construction	KG/MTR	MBL(KN)
TB8-016-608	16	6×8+FC	0.30	32.5
TB8-018-608	18	6×8+FC	0.39	42
TB8-020-619	20	6×19+FC	0.55	63.0
TB8-020-612	20	6×12+FC	0.41	49.5
TB8-022-619	22	6×19+FC	0.66	82.0

Product number | Product name

HA16-B

Bolt Joint Ferrule is pressed with one end inserted a bolt or threaded rope and the other a rope. It is a good option for the rope to be assembled to a fixed structure. It is also an alternative to connect a rope and a chain by a specially designed **BC eyelet**

No.	H/mm	h/mm	D1/mm	D2/mm	d/mm
HA16-BF	38	10	28	17	14

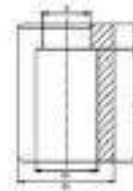


Product number | Product name

HA16-BK

Bolt joint ferrule BK is the same as bolt joint ferrule except it is shorter. It is suitable for the occasion when the tension requirement is lower.

No.	H/mm	h/mm	D1/mm	D2/mm	d/mm
HA16-BF	55	15	28	17	14



Product number | Product name

HS16-BCE

BC eyelet is specially designed to be pressed into Bolt Joint Ferrule or Bolt Joint Ferrule BK. A chain could be linked with BC eyelet. So this combination could be an easy but economic way to connect a rope end and a chain.



Product number

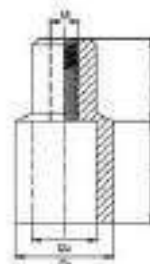
HA16-M

Product name

HA16 M10/M12

Use to connect a 16mm/20mm rope to a frame by a M10/M12 bolt.

No.	H/mm	h/mm	D1/mm	D2/mm	M/mm
HA16-CRM10	25	30	28	17.5	M10
HA16-CRM12	28	35	32	21	M12



Product number | Product name
 HA16-J | Aluminium J

To connect two ends of ropes into a loop or similar.

Size

#16	H/mm	D/mm	d/mm
	72	28	18



Product number | Product name
 HS16-SF | Standard Steel Ferrule

Standard Steel Ferrule has been designed to suit 16mm combination rope and is commonly used within playground net manufacturing.



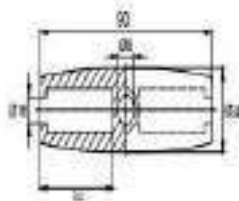
Product number | Product name
 HA16-RC | Rope Cap

Rope Cap is pressed on the end of the rope to prevent the end unravelling.



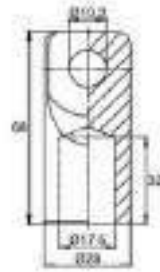
Product number | Product name
 HM16-J | Connecting Clamp

The aluminum clamp comprises of two halves. Fixation of steel swaging in interior pockets for rope connection



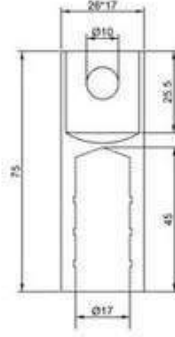
Productnumber | Product name
HA16-H | HA16-H

Aluminium ferrule H 16mm.
Use to connect a rope to a shackle, bolt or bar.



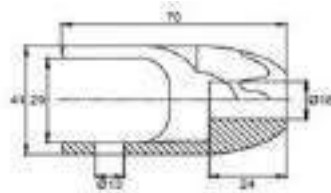
Product number | Product name
HA16-TH | HA16-TH

Aluminium ferrule TH 16mm.
External dia.: 26mm
Use to connect a rope to a shackle, bolt or bar
Notice: this ferrule can not be pressed



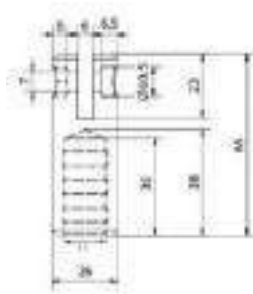
Productnumber | Product name
HA16-E | HA16 EJ

The "U" end connects a post and the other connects the rope



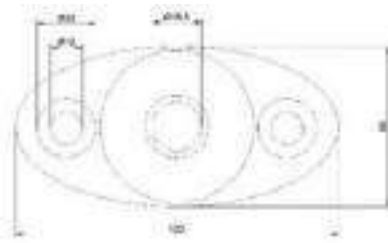
Productnumber | Product name
HA16-U | Aluminium U

The "U" end connects a post and the other connects the rope



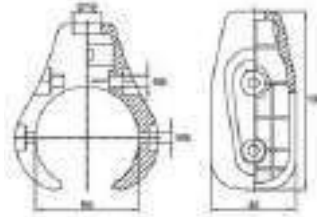
Product number | Product name
 HM16-rf | HA16-rf

*Aluminium ferrule for 16mm combination rope
 Used to attache a ropeto a wood frame*



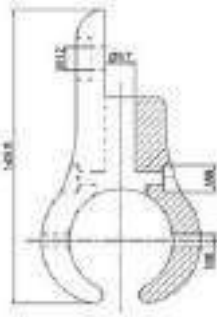
Product number | Product name
 HM60 | HA60

*-16 -16
 Well designed componentto connect rope
 elements to tubes
 suitable for 60mm OD tubes*



Product number | Product name
 HM60 | HA60

*-pnl -pnl
 Well designed componentto connect a panel to tubes
 suitable for 60mm OD tubes*



Product number | Product name
 HM16-T | Aluminum Tube Clamp-114
 HM16-T | Aluminum Tube Cmap-89
 HM16-TC114 | Aluminum Tube Clamp-76
 C89.

Made of aluminium

Used to connect small

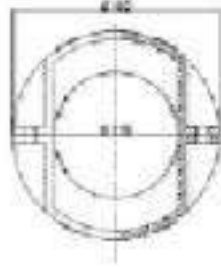
114mm/89mm/76mm tubes(32mm) to support post



Product number
HM

Productname
EuridisClamp-114

champs are used as connectors between steel posts and ropes.
Tcawstoi naglus marien usmcrewed together. The height of the clamps is variable.



Product number
HM

Product name
Steel Sphere

-S225
This is a steel sphere topped with a plastic cap. The external dia. is approx. 225mm. It is a basic element for all frame structures for spatial net devices to connect the tubes and nets.



Aluminum X-Connector

Designed to press the ropes and connector together without using any screws. A 10 ton portable press machine is needed

- Easy to assemble without pulling through the holes
- Great security. Impact-resistant at any temperature, against vandalism
- No gaps, edges or openings within reach of children
- Corrosion-resistant recyclable aluminum alloy
- High Slip Resistance
- Economical choice as cross connector
- Size: #16, #20 (for 16mm or 20mm combination rope)
-



- Nails may get loose after some time and needs regular maintenance



- There is small space between the rope and traditional connectors. The friction between them may damage the rope little by little and make the life of the rope shorter.



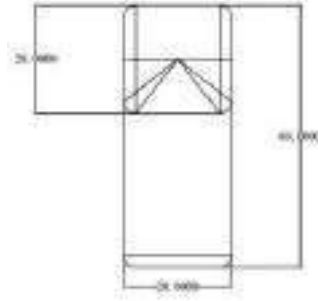
Product number
HM-A

Product name
Aluminum T-Connector

T16

Designed to press the ropes and connector together without using any screws. A 100 ton press machine is needed

This model is for 16mm rope



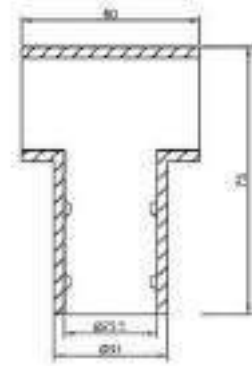
Product number
HM-A

Product name
Aluminum T-Connector

T20

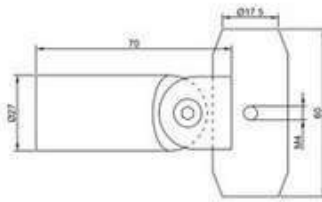
Designed to press the ropes and connector together without using any screws. A 100 ton press machine is needed

This model is for 20mm rope



Product number | Product name
 HM16-FLT | HM16Flexible T

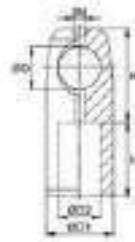
This is a flexible T-Connector in aluminium for Ø16mm rope.



Productnumber | Productname
 HA16-T | Standard Aluminium T

Standard Aluminium T is for connecting climbing nets at the "T" intersection

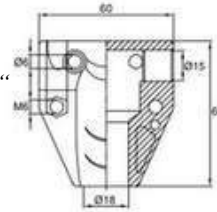
No.	D/mm	d/mm	D1/mm	D2/mm	H/mm	h/mm
HA16-T	17	4.2	28	17	33	32



Product number | Productname
 HM16-MT | HM16-MT

Made from corrosion resistant and recyclable aluminium alloy

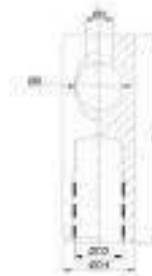
- "Seixcautrieon intoefrls otcekeilnsgwacgoinnngecitnionthoef irnotpeer ieonr d" ppoöicnkise t"
- without damage to the rope, thanks to steel swaging



Product number | Productname
 HA16-BT | HA16 BT

Aluminium T is also for connecting climbing nets at the "T" intersection. One of the differences from standard aluminium T is a bolt is needed to fix the horizontal rope instead of a tapping screw.

No.	D/mm	d/mm	D1/mm	D2/mm	H/mm
HA16-BT	17	8	26	17	75



Product number | Product name
 HM16-T | HM16-T

Made from corrosion resistant and recyclable aluminium alloy

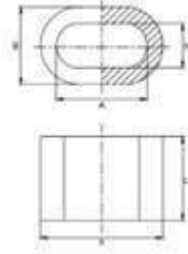
- "FSeixcautrieo nin otefrsltoeekl isnwg acgoinnngc icnt itohne oinf treorpioer e "npdo pcokient" s without
- damage to the rope, thanks to steel swaging with other rope



Product number | Product name
 HA16-E/EK | Aluminium E, Aluminium EK

suitable for forming an eye termination in 16mm diameter rope.

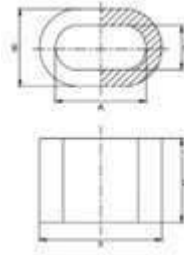
No.	A/mm	B/mm	b/mm	H/mm	L/mm
HA16-EK	3	29	17.5	45	24
HA16-E	4.5	29	17.5	45	40
HA16-E45	3 4	29	17.5	45	45



Product number | Product name
 HA20-E/EK | Aluminium E20, Aluminium EK20

suitable for forming an eye termination in 20mm diameter rope.

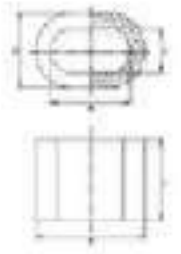
No.	A/mm	B/mm	b/mm	H/mm	L/mm
HA20-EK	43	37	21	57	40
HA20-E	43	37	21	57	48



Product number | Product name
 HA16/18-OF | Oval Ferrule

suitable for forming an eye termination in 16mm/18mm diameter rope.

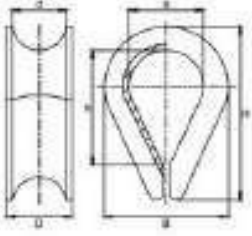
No.	A/mm	B/mm	b/mm	H/mm	L/mm
HA16-OF	34.5	27	17.6	43	31
HA18-OF	36.5	29	19.5	45	40



Product number | Product name
HSC-1SST | **HSC1 SST-16/20**

Made of stainless steel 304

Used to assemble eyebolts or similar products

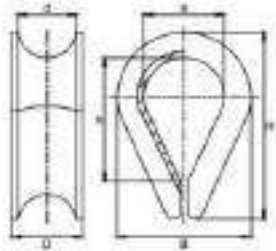


No.	B/mm	b/mm	H/mm	h/mm	D/mm	d/mm
HSC1 SST-16	53	36	74	52	19	15
HSC1 SST-20	56	38	81	60	22	17.4

Product number | Product name
HSC2 SST-16 | **HSC2 SST-16**

Made of stainless steel 304

Used to assemble eyebolts or similar products. Suitable for 16mm rope



No.	B/mm	b/mm	H/mm	h/mm	D/mm	d/mm
HSC2 SST-16	41	28	60	44	16	13

Product number | Product name
HSC3SST-16 | **HSC2 SST-16**

Made of stainless steel 304

It is a much smaller thimble than the regular used, which can help to form a small eye.

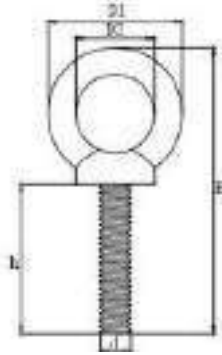
Used to assemble eyebolts or similar products. Suitable for 16mm rope

Product number | Product name

HSE1 | SS Eyebolt

suitable for use on playground equipment
supplied in a smooth stainless steel 304 finish
length(h) could be customized

No.	D1/mm	D2/mm	H/mm	h/mm	d/mm
HSE1-d10120	43.8	25.5	166	120	10
HSE1-d10150	43.8	25.5	196	150	10
HSE1-d10250	43.8	25.5	296	250	10
HSE1-d12115	51.2	29.8	166.5	115	12
HSE1-d12140	51.2	29.8	191.5	140	12
HSE1-d12200	51.2	29.8	251.5	200	12



Product number | Product name

HSLK | SSQuickLink

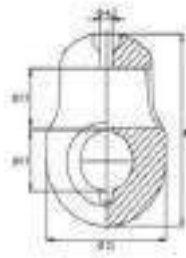
Supplied in 304 stainless steel grade material

No.	a/mm	b/mm	c/mm	d/mm
HSLK-05	5 6	13	39	6.5
HSLK-06	8 10	14.5	46	7.5
HSLK-08	12	17.5	59	10.5
HSLK-10		20.5	70	12.5
HSLK-12		23.5	83	14.5



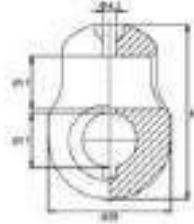
Product number | Product name
 HM16-C | CrossConnector

Cross connector allows two ropes to be connected in a cross. It is a die castmade connector from aluminium alloy



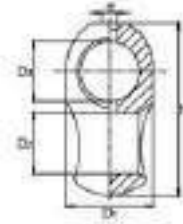
Product number | Product name
 HA16-C | AnodizedCross Connector

Cross Connector Silver is made from aluminium rod by CNC. It is anodized for water and wear resistance, more suitable for outdoor use.



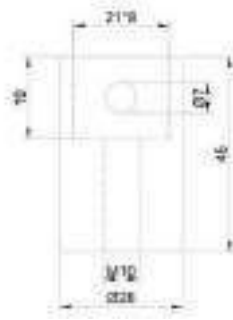
Product number | Product name
 HA16-X | Aluminium X
Aluminium X is also made from aluminium rod by CNC.

No.	H/mm	D1/mm	D2/mm	D3/mm	d/mm
HA16-OF	34.5	27 29	17.6	43 45	31
HA18-OF	36.5		19.5		40



Product number | Product name
 HS16-RCH-M12 | HS16-RCH-M12

Stainless steel chain adapter. One end connects 6mm chain and the other M12 external thread



Product number | Product name
 HA16-RCH-S26 | HA16-RCH-S26

Chain Ferrule is pressed with one end inserted a chain and the other a rope. It is designed to attach a 6mm chain to rope for fixation



Product number | Product name
 HA16-RCH-D28 | HA16-RCH-D28

Aluminium ferrule CH 16mm. Use when you want to attach a 6mm chain to rope for fixation

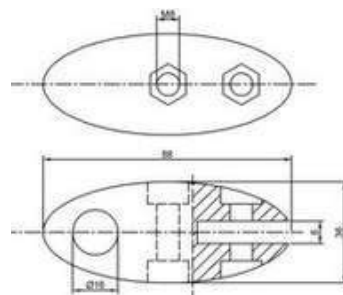


Product number | Product name
 HA16-CFM6 | ChainFerrule M6

One end connects a chain fixed by a M6 bolt and the other connects a threaded rod, which will be fixed to a fixed structure



Product number | Product name
 HM16-rmc | RubberMat Clamp
 The aluminium clamp provides a durable connection between the rope and rubber membrane

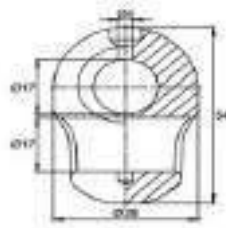


Product number | Product name

HP16-C

Made of Nylon (PA6)

A solid egg connector for 16mm combination rope which allows two ropes to be connected in a cross

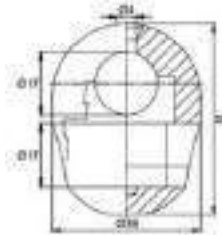


Product number | Product name

HP16-SC

Standard Connector Made of Nylon (PA6)

The clip is supplied in two sections and simply clips together where the rope intersects. When clipped together a securing screw firmly holds the egg connector in place.

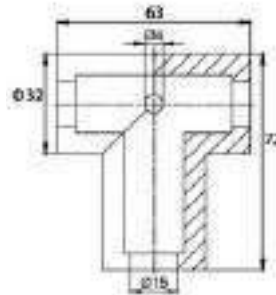


Product number | Product name

HP16-T

Standard T Connector Made of Nylon (PA6)

Standard T Connector is a standard component for connecting climbing nets at the "T" intersection. The component is supplied in two sections where the pressed end of the rope is placed at 90 degrees to the through rope. The top is then snapped onto the base component and fixed with a securing screw.

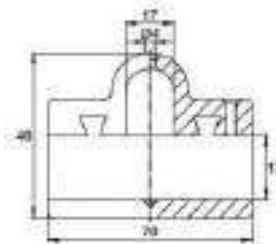


Product number | Product name

HP16-X

Made of Nylon (PA6)

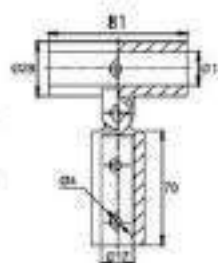
A very heavy duty 16mm steel combination rope cross over connector. The two components slide together and interlock with 3 security screws holding the component firmly in place.



Product number | Product name

HP16-FET Flexible T Connector Made of Nylon (PA6) An ideal

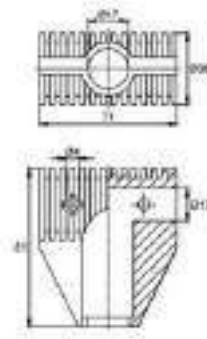
connector when manufacturing net bridges or for any rope horizontal where you need a flexible vertical element



Product number | Product name
 HP16-FLT | FlangedTConnector

Made of Nylon (PA6)

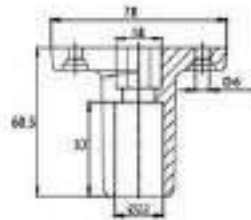
The component is supplied in two sections where the pressed end of the rope is placed at 90 degrees to the through rope. The top component then slides into the base one and fixed with a securing screw.



XConnector

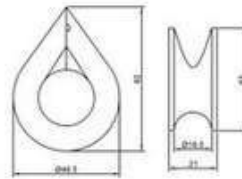
Product number | Product name
 HP16-STN

Made of Nylon (PA6)
To assemble rope products in wooden (soft material) frames. Standard Netholder



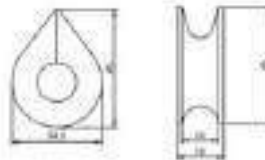
Product number | Product name
 HP16-OT | OpenThimble

Open Thimble can be used to either form an eye or can be used in combination with an eyebolt or a shackle. This thimble should be used in conjunction with our Long or Short Aluminium Ferrule.



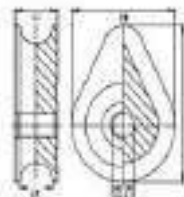
Product number | Product name
 HP16-OST | OpenSmall Thimble

Made of Nylon (PA6) The thimble is much smaller than Open Thimble (Open Thimble) and used to form a small eye. *Open Small Thimble can be used to either form an eye or can be used in combination with an eyebolt or a shackle.*



Product number | Product name
 HP16-FT | FilledThimble with Round Hole

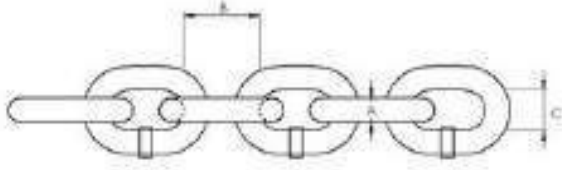
An infilled solid thimble manufactured from Nylon with a rotating central insert which can be fixed into timber with a torx security screw or a M8 countersunk bolt.



Product number
HC-SLC

Product name
SSShortLink Chain

The chain is manufactured from AISI 316 stainless steel with a polished finished



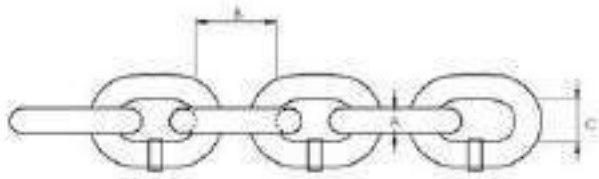
Product number	A/mm	B/mm	C/mm	Length/m
HC-SLC6	6 8	18 24	9	25 25
HC-SLC8			10	



Product number
HC-GLC

Product name
Galvanised Short Link Chain

The chain is hot dip galvanized, G60 grade

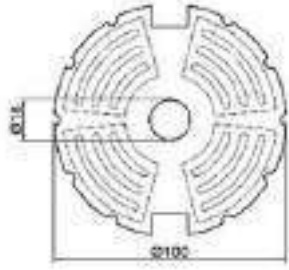


Product number	A/mm	B/mm	C/mm	Length/m
HC-GLC6	6 8	18 24	8	as per request
HC-GLC8			10	as per request



Product number | Product name
HP16-cld ClimbingDisk

Made of Nylon (PA 6)
Usedasastepon climbingropes



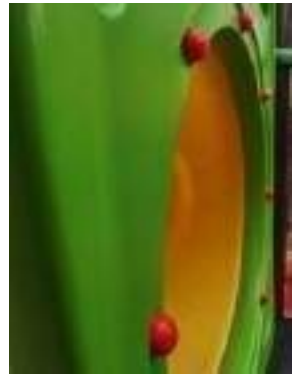
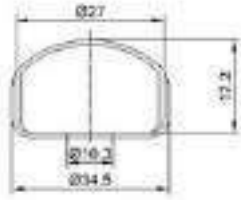
Product number | Product name
HP16-cld ClimbingRock

Made of PP
Usedasastepon climbingropes



Product number | Product name
HP16-CEM10 | CoveredEnd M10

Made of Nylon (PA6)
Covered end flat Ø10. Use to cover a bolt or a nut. Delivered complete in two halves



Product number | Product name
HM16-T 114 | Aluminum Tube Cap-
HM16-T. 89 | 114 Aluminum Tube
HM16-T 76 | Cap-89

Made of aluminium | Aluminum Tube Cap-76
Used to cover a tube of size 114mm/89mm/76mm



Product number | Product name
HM16-TB 114 | Aluminum Tube Bae-114
HM16-TB 89 | Aluminum Tube Base-89
HM16-TB 76 | Aluminum Tube Base-76

Made of aluminium
Used as protection for the tube on the ground



Product number | Product name
HP16-SAH | SpringAnimal Handle

Made of PP
Use as handles or foot rest for spring animals or similar



Product number	PlateDia D	Rim Thickness H
SW-01-8008	80cm	10cm
SW-01-80 12	80cm	12cm
SW-01-1008	100cm	10cm
SW-01-100 12	100cm	12cm
SW-01-1208	120cm	10cm
SW-01-12012	120cm	12cm

The bird nest swing seat is made from a galvanised steel ring with galvanised steel hanging lugs. The swing seat comes complete with traditional 2-point suspension ropes which are 1.2m long wire reinforced rope plus a 0.6m long chain. Alternatively, the suspension rope can be 1.8m long rope. The suspension rope is connected with the seat by a stainless steel shackle. The inside seating area is also made from 16mm wire reinforced rope which has been woven together with a 22mm polypropylene outer rope.



Product number	Product name
	OvalBasket Swing

SW-02

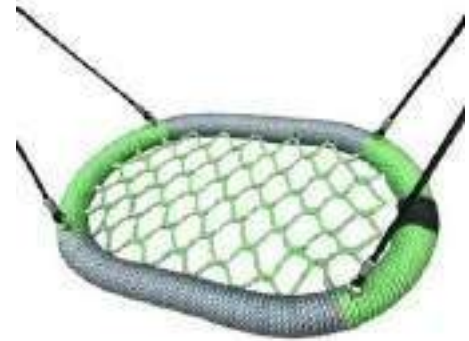
Rim Thickness:10cm

Color:grey/green or as per requirement

Dia.:100cm

Seat material:16mm,4strand combination rope

Hange rope:16mm,6 strand combination rope



Product number	Product name
	Rectangle I Basket Swing

Rim Thickness:10cm

Color:blue,black,red,green,orange,yellow

Dimention:80cm*150cm

Seat material:16mm,4strand combination rope



Product number	Product name
	Rectangle I Basket Swing

SW-03-002

Color:blue,black,red,green,orange,yellow

Dimension:80cm*150cm

Seat material:16mm,4strand combination rope

Hange rope:16mm,6 strand combination rope



Product number	Product name
	CradleSeat

S04-178

RubberBabySwing 432 x 290 x 230

One 5mm 1.8mtr long galvanized chain is included

There is steelinsert inside the seat for great support

the swing seatsupports the seated infant all around so that the feeling of security is guaranteed. the swingingmotion trains the child’s motor skills, specifically thesense of balance and space



Product number	Product name
	FlatSwingSeat

S04-179

Rubber BabySwing 450 x180 x 35 with steel insert



Product number	Product name
	BeltSwingSeat

S04-180

RubberBabySwing 145x760 x 6 with steel insert



Product number

Product name

FullBasket Children Swing(Small Size)

S04-181
material:EVA
opening:29.5cm
depth:22cm
for 1-2 yrs old



Product number

Product name

FullBasket Children Swing(Big Size)

material:EVA
opening:32.5cm
depth:24cm
for 3-7 yrs old



Product number

Product name

BirdNest Swing Seat

SW-05-001
100cm rope seat is available

The bird's nest seat is designed to be light in weight and in compliance with global safety standards. The soft, shock absorbent bumpers with non-slip surface makes the swing seat extremely user friendly.



Product number

Product name

BirdNest Swing Seat

Colourful, opening, padded, standard colour blue or black

Seat made of steel-rope chain-link mat

Suspension ropes with rubber-fabric tubing

Size: Ø 1.0m/Ø1.2m



Product number

Product name

ThickRope Seat

140cm x 140cm square rope, made of u.v. stabilized polypropylene material

With a steel core in the very middle or without as per request

Color: nature

Length: 2.35m with 4 seats

Other lengths upon request



Product number

Product name

BalancingRope

140cm x 140cm square rope, made of u.v. stabilized polypropylene material

With a steel core in the very middle

Color: nature

Fixation: threadbar M16 x 200 mm on both ends

Length: 150cm, 300cm

Other lengths upon request



Product number

Product name

Slackline

The slackline is an attractive equipment to test your balance and skill as you try and traverse from one platform to the next without falling off.

Length: 2mtrs, 3mtrs, 4mtrs



Product number
ACN-8HEX-PES

Product name
AntiClimb Netting

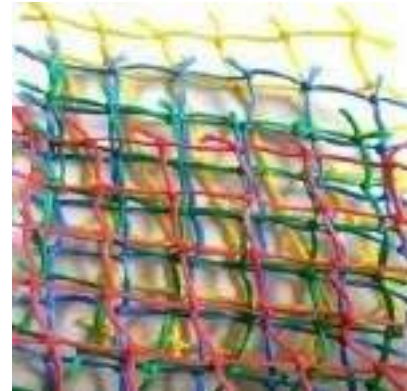
This hexagonal netting is used in Indoor playgroom barrier nets. The small mesh (8mm) can stop children climbing the forbidden apparatus effectively. The 8mm hexagon honeycomb netting is also fire retardant netting which makes it ideal for play centres, childrens play areas, industrial and commercial use.



Product number

Product name
BraidedPolyethylene Netting

This netting is constructed of 16 strands durable high density polyethylene twine. It is one of the most popular netting in the playground, mainly used in indoor play areas. We have various colors available.



Item No.	Dia.&Mesh	Twine Runnage
BE30045	3.0mm×30mmsq	300m/kg
BE30050	3.0mm×50mmsq	300m/kg
BE30060	3.0mm×60mmsq	300m/kg
BE40050	4.0mm×50mmsq	235m/kg



Product number

Product name

Hexagonal Nylon Netting

ACN-HEX-01N
Spec: 5.0mm × 45mmsq

Made of strongest yarn on the market nylon material

Application because of its high level safety:
bottom net in the climbing course
climbing net

Color available: black, grey



Product number

Product name

Square Mesh Nylon Netting

ACN-SQ-01N
Spec: 5.0mm × 50mmsq

Made of strongest yarn on the market nylon material

Application because of its high level safety:
bottom net in the climbing course
climbing net

Color available: black, grey



Product number

Product name

Hexagonal Polyester Netting

ACN-HEX-01P

Spec:5.0mm ×45mmsq

Made of high tenacity polyester material

Application : perimeter netting, bottom net

Color : various



Product number

Product name

Binding Nylon Cord

PES-004

Spec:6mm,3 strands twisted

Made of high tenacity polyester material

Application : to fix the netting to the frame

Color : grey

